

Ultrasound Imaging for a Male with Anterior Knee Pain

CME
Credits

Yi-Chen Huang¹, Wei-Ting Wu², Ke-Vin Chang^{2*}

¹National Taiwan University Hospital and National Taiwan University College of Medicine, Taipei, Taiwan, ²Department of Physical Medicine and Rehabilitation, National Taiwan University Hospital and National Taiwan University College of Medicine, Taipei, Taiwan

SECTION 1 – QUIZ

A 63-year-old male had right anterior knee pain and swelling after a contusion 1 week ago. The range of motion of his right knee was normal. He did not receive any surgery on the affected knee. During the physical examination, we found redness and swelling over the skin of his right infrapatellar region [Figure 1a]. He later underwent an ultrasound examination. Figure 1b was obtained by placing the transducer over the tibial plateau in the horizontal plane. Figure 1c was a panoramic image obtained by moving the transducer from the inferior patellar pole to the tibial plateau in the sagittal plane. The structure indicated by white arrows appeared to be the lesion. What is your impression?

Declaration of patient consent

The authors certify that they have obtained all appropriate patient consent forms. In the form, the patient has given his consent for his images and other clinical information to be reported in the journal. The patient understands that his name and initials will not be published and due efforts will be made to conceal identity, but anonymity cannot be guaranteed.

Financial support and sponsorship

Nil.

Conflicts of interest

Dr. Ke-Vin Chang, an editorial board member at *Journal of Medical Ultrasound*, had no role in the peer review process of

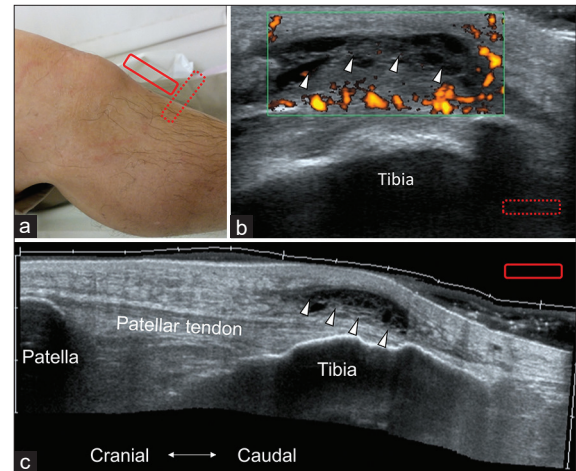


Figure 1: (a) During the physical examination, we found redness and swelling over the skin of his right infrapatellar region; (b) the image was obtained by placing the transducer in the horizontal plane over the tibial plateau; (c) the panoramic image was obtained by moving the transducer from the inferior patellar pole to the tibial plateau in the sagittal plane. The structure indicated by the white arrows was the lesion

or decision to publish this article. The other authors declared no conflicts of interest in writing this paper.

Address for correspondence: Dr. Ke-Vin Chang,

Department of Physical Medicine and Rehabilitation, National Taiwan University Hospital, Bei-Hu Branch and National Taiwan University College of Medicine, No. 87 Neijiang St, Wanhua District, Taipei City 108, Taiwan.
E-mail: kv.chang011@gmail.com

Received: 03-06-2020 Revised: 04-07-2020 Accepted: 13-07-2020 Available Online: 05-09-2020

Access this article online

Quick Response Code:



Website:

www.jmuonline.org

DOI:

10.4103/JMU.JMU_83_20

This is an open access journal, and articles are distributed under the terms of the Creative Commons Attribution-NonCommercial-ShareAlike 4.0 License, which allows others to remix, tweak, and build upon the work non-commercially, as long as appropriate credit is given and the new creations are licensed under the identical terms.

For reprints contact: WKHLRPMedknow_reprints@wolterskluwer.com

How to cite this article: Huang YC, Wu WT, Chang KV. Ultrasound imaging for a male with anterior knee pain. *J Med Ultrasound* 2021;29:229.